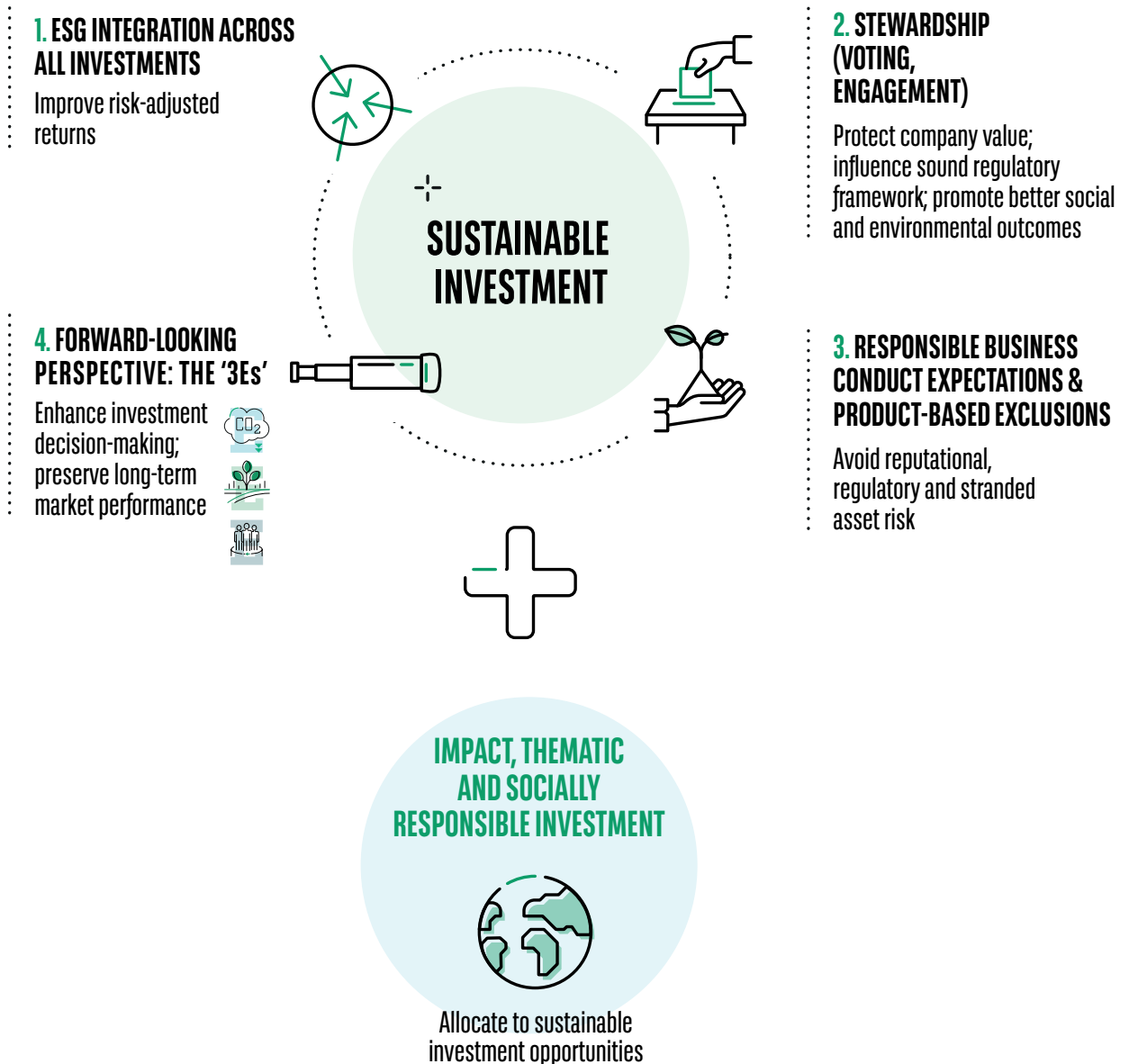

B. THE COMPONENTS OF SUSTAINABLE INVESTMENT: AN OVERVIEW

Sustainable investment includes four elements, all of which are utilised by BNPP AM. Together, these approaches strengthen the way we invest, including how we generate investment ideas, construct optimal portfolios, control for risk and use our influence with companies and markets.

We introduce these approaches below, and explain our approach more fully in the subsequent pages.



BNP Paribas Asset Management is the source for all data in this document as of March 2019, unless otherwise specified.

Investments are subject to market fluctuations and other risks inherent in investments in securities.

The value of investments and the income they generate may go down as well as up and it is possible that investors will not recover their initial outlay.

This material has been prepared by BNP PARIBAS ASSET MANAGEMENT France. It is issued by BNP PARIBAS ASSET MANAGEMENT Asia Limited with its registered office at 17/F Taikoo Place, 979 King's Road, Quarry Bay, Hong Kong and BNP PARIBAS ASSET MANAGEMENT Singapore Limited with its registered office at 20 Collyer Quay, #01-01, 20 Collyer Quay, Singapore 049319 - Company Registration No. 199308471D (the "Companies"). This material has not been reviewed by the Hong Kong Securities and Futures Commission or the Monetary Authority of Singapore. This material is produced for information purposes only and does not constitute:

1. an offer to buy nor a solicitation to sell, nor shall it form the basis of or be relied upon in connection with any contract or commitment whatsoever or
2. investment advice.

Opinions included in this material constitute the judgement of the Companies at the time specified and may be subject to change without notice. The Companies are not obliged to update or alter the information or opinions contained within this material. While all efforts are taken to ensure the accuracy of the information and data included in this material, no warranty is given and no liability shall be accepted in the event of any error, inaccuracy or discrepancy of such information and data. Investors should consult their own legal and tax advisors in respect of legal, accounting, domicile and tax advice prior to investing in the financial instrument(s) in order to make an independent determination of the suitability and consequences of an investment therein, if permitted. Please note that different types of investments, if contained within this material, involve varying degrees of risk and there can be no assurance that any specific investment may either be suitable, appropriate or profitable for an investor's investment portfolio.

Investments involve risks. Given the economic and market risks, there can be no assurance that the financial instrument(s) will achieve its/their investment objectives. Returns may be affected by investment strategies or objectives, markets and economic conditions. The different strategies applied to the financial instruments may have a significant effect on the results portrayed in this material.

Past performance and any economic and market trends/forecasts are not a guide to current or future performance and the value of an investment may go down as well as up. Investors may not get back the amount they originally invested.

