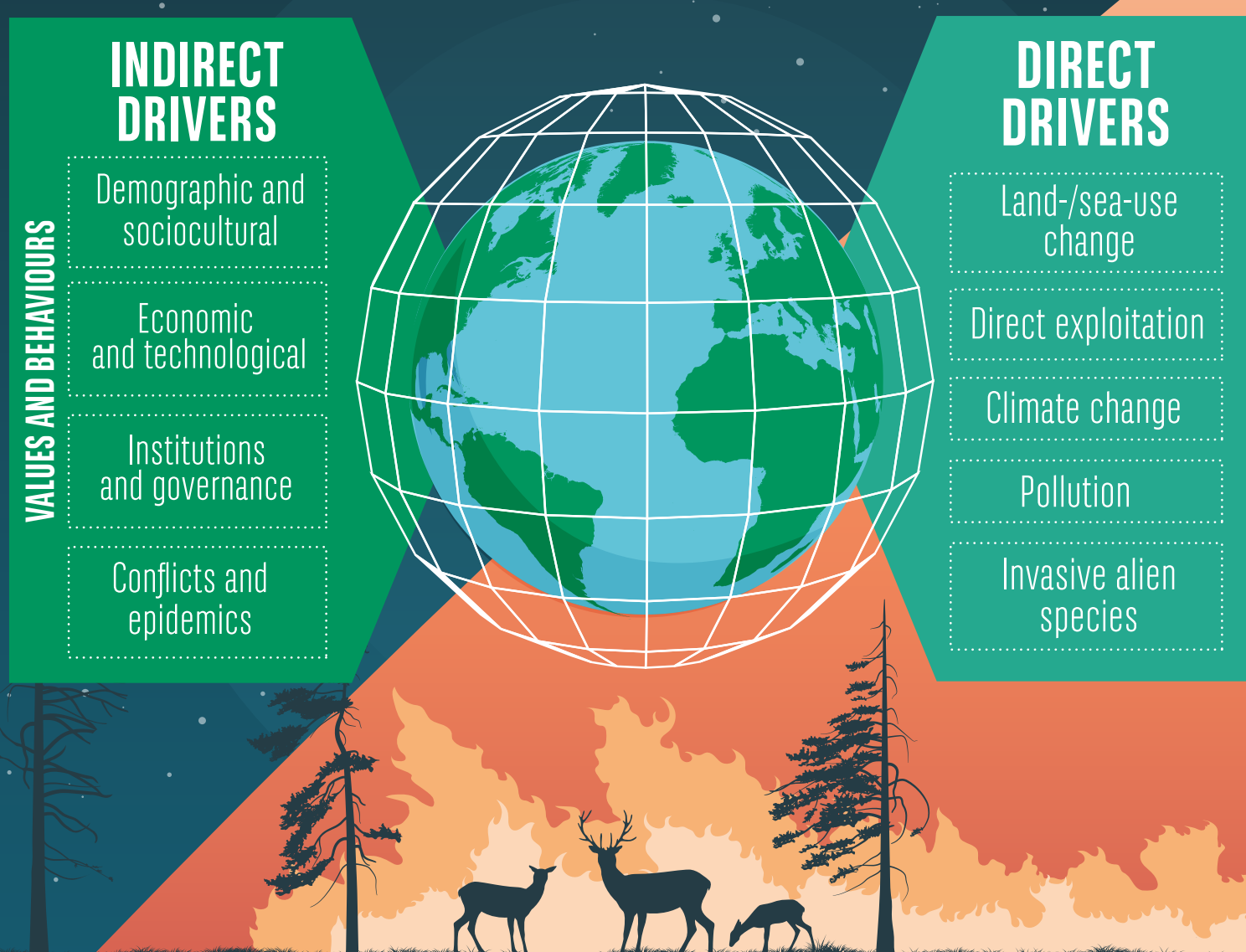


BIODIVERSITY- WHAT'S AT STAKE?

THE DIVERSITY WITHIN AND BETWEEN SPECIES AND OF ECOSYSTEMS IS DECLINING FASTER THAN AT ANY TIME IN HUMAN HISTORY

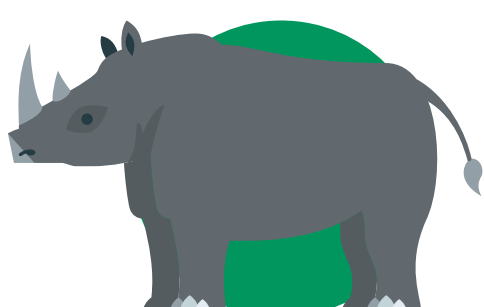
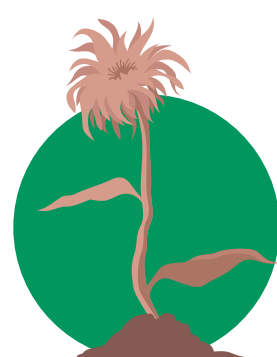


EXAMPLES OF DECLINE

Natural ecosystems have

DECLINED BY 47%

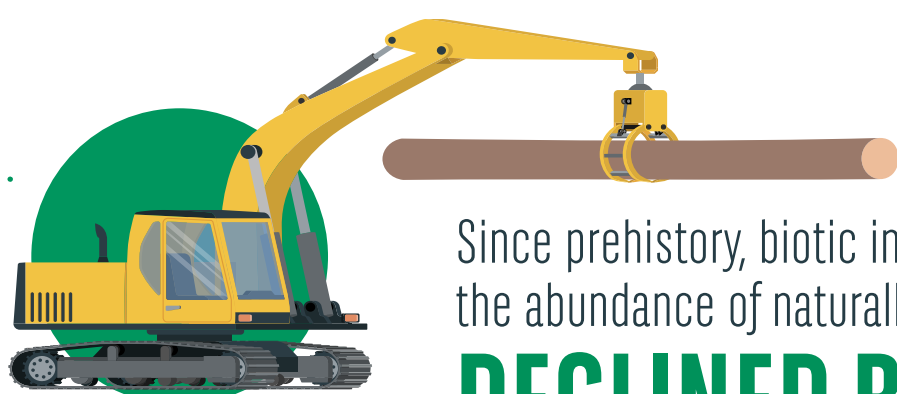
on average, relative to their earliest estimated status



Approximately

25% OF SPECIES

already threatened with extinction in most animal and plant groups



Since prehistory, biotic integrity – the abundance of naturally present species - has

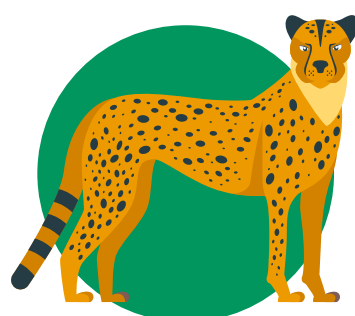
DECLINED BY 23%

on average in terrestrial communities

Since the rise of human civilisation

82%

of wild mammals have been lost



72% OF INDICATORS

developed by indigenous peoples and local communities show ongoing deterioration of nature

Source: IPBES Global Assessment Report on Biodiversity and Ecosystem Services, 2019

The value of investments and the income they generate may go down as well as up and it is possible that investors will not recover their initial outlay.

This infographic is issued by BNP PARIBAS ASSET MANAGEMENT Holding, a Public Limited Company with its registered office at 1, boulevard Haussmann, 75009 Paris, France, RCS Paris 682 001 904. BNP PARIS ASSET MANAGEMENT Holding comprises a number of entities. For further information, visit www.bnpparibas-am.com



BNP PARIBAS
ASSET MANAGEMENT

The sustainable investor
for a changing
world